

The background of the entire page is a photograph of a ski resort. In the foreground, a person in dark winter gear is standing on a snowy slope. Behind them, a row of colorful, snow-covered buildings with red and green roofs stretches across the middle ground. To the left, there are racks filled with skis and snowboards. The sky is a clear, bright blue with a few wispy clouds. The overall atmosphere is bright and inviting, typical of a winter sports destination.

Aseessippi

2022 ~ 2023

School Ski & Snowboard Program

Day Trips
Overnight Accommodations
Ski & Snowboard Lessons
Meal Plans & Activities
AND TONS OF FUN!

For Details and More Information
Please Call 1-888-564-2001
www.aseessippi.com

YOUR SKIING, SNOWBOARDING
AND TUBING ADVENTURE

ASESSIPPI.COM



WE'RE ALL ABOUT HOSPITALITY!

YOU'LL LOVE OUR RESORT AND HOTEL

Each School Group Package Includes:

- One night of accommodation
- One buffet breakfast
- Ski or snowboard rentals
- Lift passes & Helmet Rental
- Lesson & Orientation
- 5% GST & 7% PST INCLUDED in pricing

The Resort Features Skiing, Boarding and Snow Tubing:

- 26 Downhill Runs ranging from very beginner to expert!
- One Quad and Two Triple Chair Lifts
- 650 foot Snow Carpet
- 100% Snowmaking
- 2 Terrain Parks – Central Park & Robins Run
- Night Skiing & Riding
- Expanded Tubing Park with 4 Downhill Tubing Runs
- Ride up - slide down on the 650 foot Snow Carpet
- Snowshoeing -50 sets of rentals -marked trails
- Charming Winter Village with Food Court
- Sugar Shack seating for 200+
- Module & Deck seating for 500+
- Trails End Gift and Pro Shop

Fully Stocked Rental Department

- 850 + Skis
- 350 + Boards
- 600 + Helmets
- 200 + Tubes
- Fully equipped Tech Shop with On-duty Tech

Snow School

- School Group Lessons
- Adaptive Ski Program

Speedy Check In & Drop Off at the Russell Inn

- Upon arrival; your envelopes will contain room keys, assigned student names and swimming wristbands.
- Chaperone from your group can check the whole group in, take the envelopes and hand them out on the bus.
- In most cases, your bus driver can pull the bus around to the wing you are assigned to for easy unloading.



EXPERIENCE OUR 41 GUEST ROOMS, 26 SUITES AND 27 TRUNDLE ROOMS
POOL, WATER SLIDE AND HOT TUB, MOVIES, WIFI, CONFERENCE ROOMS & MORE!

Chaperones **SKI FREE** based on a 1:10 ratio

Chaperones also stay for free during the discount rates!

(based on a 1:10 chaperone :student ratio and based on double occupancy in a regular room, triple in a suite or quad in a trundle room)



WELCOME TO THE RESORT

YOUR DAY STARTS HERE

ARRIVAL:

When your bus arrives at Asessippi, please have your lead teacher report to the guest check in. A member of our team will welcome your group to the resort and help guide your students into the chalet for a brief presentation!

ORIENTATION:

Your presenter will provide students and chaperones with direction on how the day will proceed; discuss local rules and review behavior expectations. Lift Tickets are distributed at this time. This presentation will take about 15 minutes.

BAGS & GEAR:

From here, the group will be escorted to an area on the lower level where students can drop off excess baggage, lock up valuables and get out of their snow boots!

Please Note: 2 & 3 day visitors will be asked to take their helmets and boots to the hotel at the end of each day.

RENTAL SHOP:

Next stop is equipment! Equipment is pre-set ahead of time, labelled and set out alphabetically by individual's first name and last initial.

INSTRUCTION PROCESS: our instructors are awesome!

Once equipped, students will be met at the back door of rentals and directed to either the learning area or Easy Street to commence the lesson process.

BEGINNERS: (0-1 time)

Will have been given a lift ticket with a beginner marking on it which gives them access to the learning area only. Once the student has progressed through the stations; can turn in both directions; stop in control; and has experienced the chair lift, they may be given Squirrel Chair access which services our easy terrain.

Skiers & boarders that are beyond the beginner level will be directed to Easy Street where EVALUATIONS take place.

Students demonstrating the ability to link turns and stop, but travel slowly and cautiously on easy terrain will be assigned to a **NOVICE LESSON**.

Those that travel with more speed and confidence and can demonstrate rhythm and fluidity on terrain will be assigned to an **INTERMEDIATE LESSON**.

Following these lessons students may be given Squirrel Quad or all areas access.

UPGRADES are offered daily at 9:30am and 1:00pm. (may vary depending on arrival time)

Upgrades are not full lessons. Instructors re-evaluate student's advancements from their morning lesson and provide feedback. Students that can vary turns and adapt to different conditions on any terrain with control, confidence and increased speed will receive an all areas marking.

ADVANCED LESSONS are available daily at 2:00pm. Participants must have an all areas access pass to qualify and must pre-register for advanced lessons with Group Check-In prior to 1:00pm.

2022-23 Asessippi Ski Area & Resort School Program



Regular Season Monday to Friday *February 1 – March 17, 2023*			
Regular Season:		Extra's	
Lift Only	\$29.50	Tubing Add On	\$9.00
Ski or Snowboard Equipment	\$24.75	Snowshoe Add On	\$9.00
Helmet (Own Equipment)	\$5.00	Board Only (Own Boots)	\$15.25
Tubing Only	\$15.00	Board Boots (Own Board)	\$10.00
Snowshoe Only	\$15.00	Skis Only (Own Boots)	\$12.75
Asessippi Meal Voucher	\$15.00 each	* Ski boots only <i>not</i> available	
Adaptive Ski Program:	Call to book	Wrist guards (Refundable)	\$10.00

Chaperones Ski / Board for FREE based on a 10:1 student to chaperone ratio
and Tube / Snowshoe for FREE based on a 5:1 ratio.

Students aged 6 & up qualify for skiing or snowboarding at above rates; ages 5 & under do require private ski/board lessons with a school group and must be pre-booked.

Additional divisional chaperones are welcome, and, if pre-registered will qualify for the same reduced rates as students. All other chaperones will pay ticket counter rates.

Low Season December 2, 9, 15, 16 January 6, 13, 19, 20, 25, 26, 27, 30, 31 March 20-24, 27-31 - April 5-7			
Low Season:		Extra's	
Lift Only	\$25.50	Tubing Add On	\$9.00
Ski or Snowboard Equipment	\$21.75	Snowshoe Add On	\$9.00
Helmet (Own Equipment)	\$4.25	Board Only (Own Boots)	\$15.25
Tubing Only	\$12.75	Board Boots (Own Board)	\$10.00
Snowshoe Only	\$12.75	Skis Only (Own Boots)	\$12.75
Asessippi Meal Voucher	\$15.00 each	* Ski boots only <i>not</i> available	
Adaptive Ski Program:	Call to book	Wrist Guards (Refundable)	\$10.00

Helmets are *mandatory* for students & chaperones riding on a school program ticket and are included with ski or snowboard equipment rentals. Lessons are part of our School Program and instruction is provided at all ability levels.

All rates include 5% GST & 7% PST where applicable.

Contact our Sales Team for your next School booking:

Kendra Sitko, Sales Manager Ext. 125 / Email kendra@asessippi.com

Debbie Kriewaldt, School Sales Ext. 101 / Email debbiek@asessippi.com

Phone 204.564.2000 or Toll Free 1.888.564.2001

Visit www.asessippi.com/school-bookings/ for full program details!

Nourishment is very important when participating in an outdoor winter activity. The Asessippi Food Voucher Program ensures all enjoy a *well balanced meal* at a reasonable price. Overnight guests may also arrange group dinners at The Russell Inn. We offer amazing meal options from our on site Pizza Hut, Subway, Tim Hortons and Family Dining Restaurant. Please note prices are subject to change prior to Ski Season opening.

Breakfast Buffet at the Russell Inn is included with each School Group Overnight Package.

RUSSELL INN OVERNIGHT GROUP MEAL OPTIONS ARE AS FOLLOWS

(ALL MEALS ARE PER PERSON TAXES INCLUDED) : Ranging from \$11.90 - \$14.15

Pizza Hut Pizza Party	Chicken Finger Dinner
Roast Turkey Dinner	Lasagna Dinner
Spaghetti n' Sauce	Soft Taco Bar

PIZZA HUT express

Pizza and Drinks can be arranged for your group!
Buy one at reg. price and get the second for only \$10.75



SUBWAY eat fresh!

Our on site Subway restaurant has fresh and easy order options for your group. Great for the bus ride home!



TIM HORTON'S

Our on site Tim Horton's Kiosk features fresh baked goods, breakfast sandwiches specialty coffees and beverages.



SCHOOL FOOD VOUCHER PROGRAM

Pre-order meal voucher ~ ONLY \$15.00 PER PERSON (taxes included)

Choose your meal and redeem the voucher for payment. Simple, great value and you can take comfort in knowing students are getting a well-balanced meal while enjoying their outdoor experience! Please note; options are subject to change upon availability.

- Cheeseburger Combo
- Hot Dog Combo
- Poutine
- Daily Lunch Special
- 6" Individual Cheese or Pepperoni Pizza & Chips
- Chicken Finger Combo
- Soup and Sandwich Combo
- Breaded Chicken Burger Combo
- Chilli and a Bun



All meals include fries or a small caesar salad, small fountain drink, Juice or milk and a cookie or an apple (unless otherwise indicated). Fries not an option with Pizza choice. Combo's do not include poutine and the poutine option has no added sides.

ALLERGIES AND SPECIAL REQUIREMENTS

Food at The Russell Inn is prepared totally peanut free; no peanut oil or nut extracts are used. Our chef has a well-rounded knowledge of allergies and will gladly accommodate any of your dietary needs. If there is a food allergy present, please inform your school program manager.



Your Après Ski Destination Hotel

Our onsite amenities include:

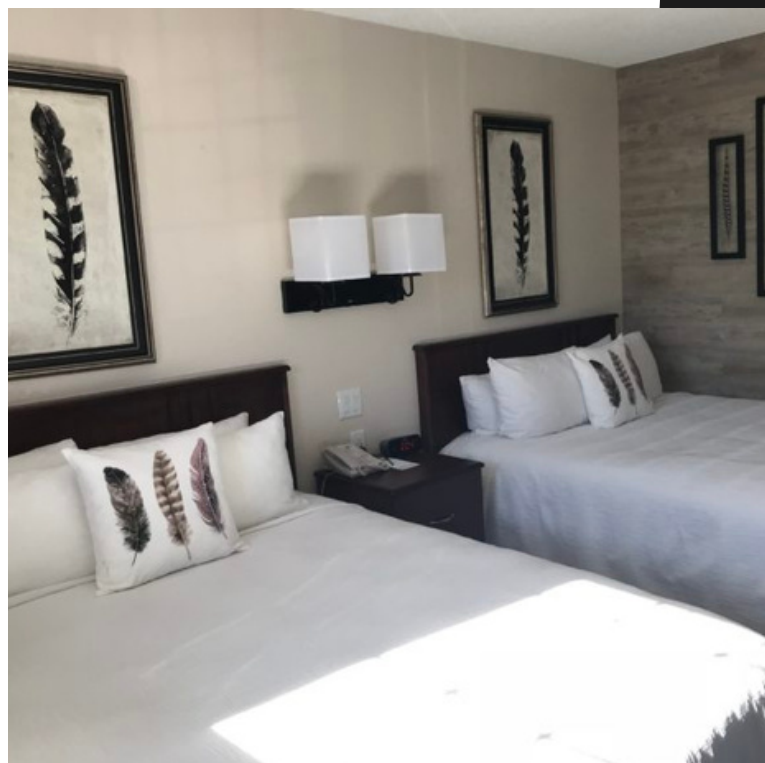
- Family Restaurant
- Pool, Hot Tub and Fitness Center
- Stag and Raven Spa
- Pizza Hut Express
- Subway
- Tim Horton's

Box 578 * HWY # 16

Russell, Manitoba, Canada R0J 1W0

Phone: 204-773-2186 Toll Free: 1-800-665-0678

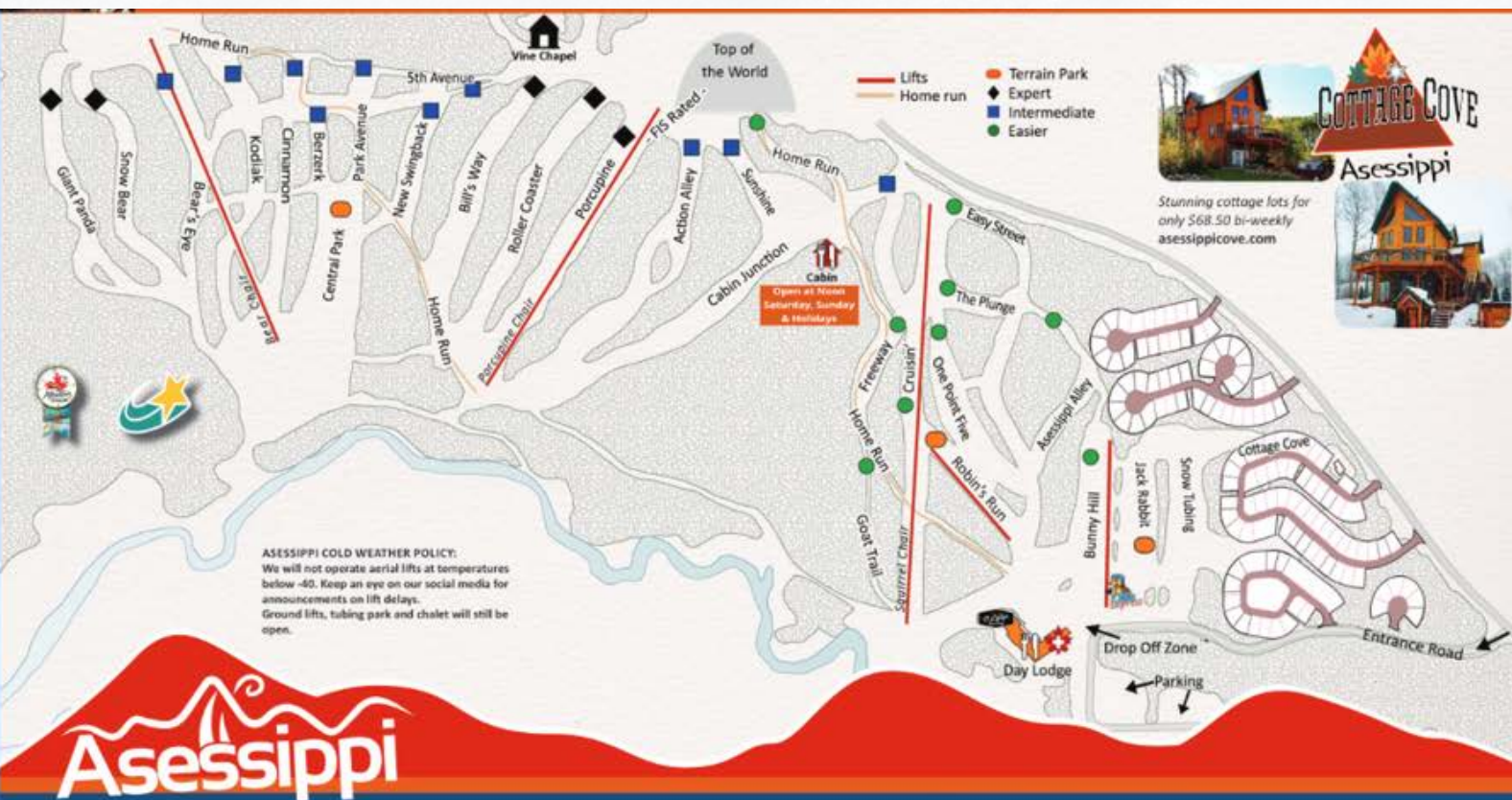
Email: frontoffice@russellinn.com



russellinn.com

Assessippi

Manitoba's Ski Snowboard & Mountain Bike Resort



Asessippi



LIFT ACCESS
**MOUNTAIN
BIKING**

CALL FOR INFO. ON
SCHOOL & GROUP
PACKAGES
(204) 564 2000